

## Going to Town

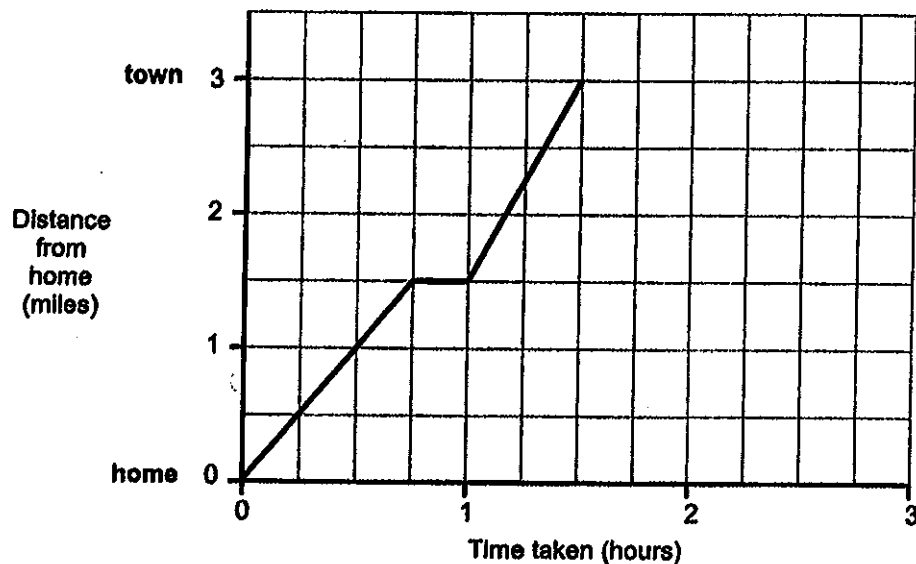
This problem gives you the chance to:

- Interpret and complete a distance/time graph for a described situation

Craig and James walk from home to town during the school holidays.

The distance/time graph below shows their journey into town.

They set off from home at 10:30 a.m.



1. At what speed did they walk for the first part of their journey?

Show how you figured it out. \_\_\_\_\_ miles per hour

2. What do you think they do after they have travelled  $1\frac{1}{2}$  miles?

---

---

---

3. After an hour the graph is steeper. What does this tell you about Craig and James's walking speed?

---

---

---

Craig and James stay in town for an hour and then catch a bus home.  
The bus averages 12 miles per hour.

4. At what time did they get home?  
Show how you figured it out.

---

5. Continue the graph on the previous page to show the rest of this information.

